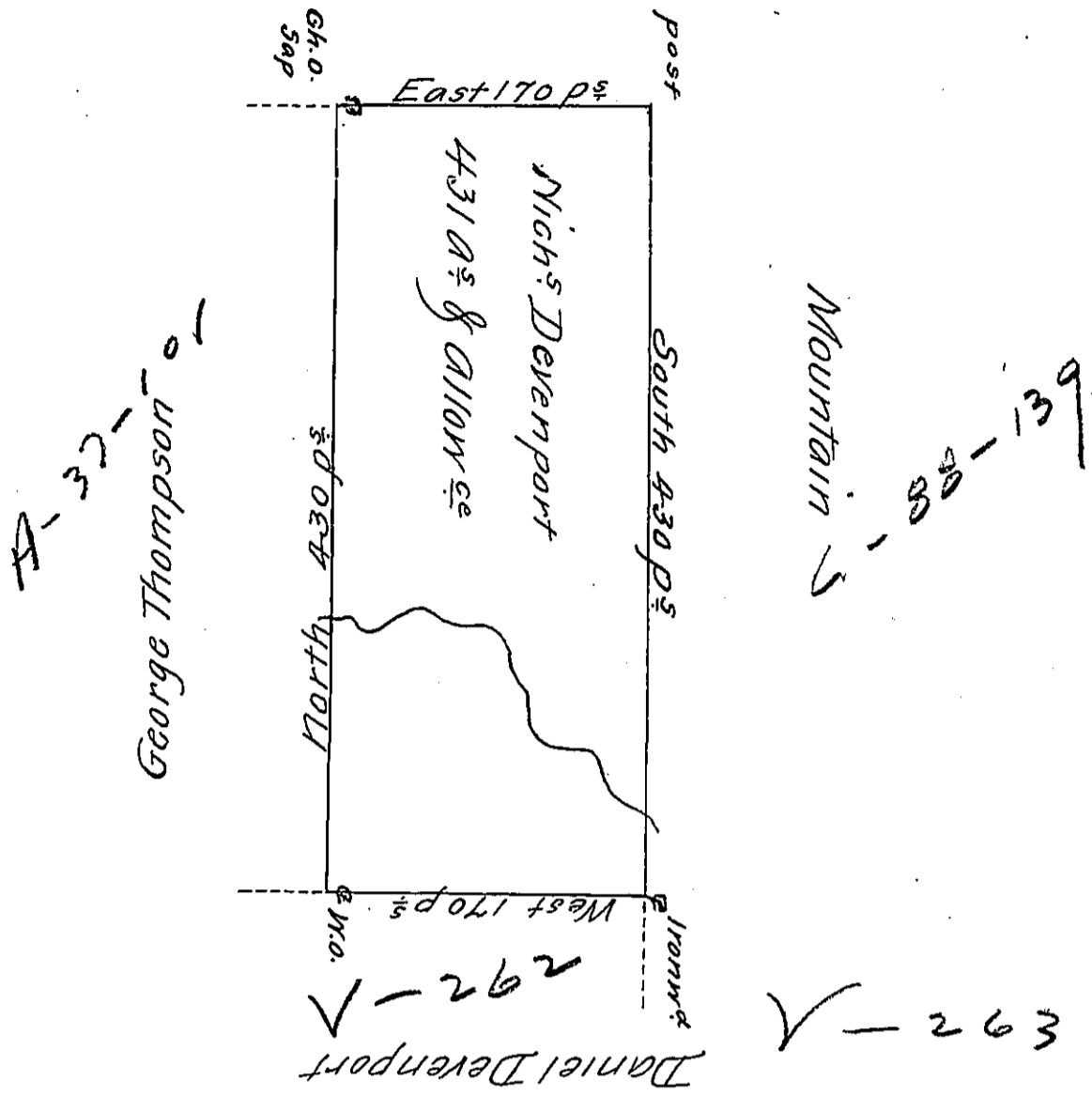


Assa Brown



A Draught of a Tract of Land situate on the Waters of Burneys Creek in the County of Luzerne, Containing Four hundred and thirty one Acres and Allow^{ce} of six p̄ Gt Surveyed July 19th 1793 on a Warrant to Nich^s Devenport dated the 13. August 1792 - Taken from the field Notes of Joseph. J. Wallis then Deputy Surveyor.

Henry Donnel D.S.

To Daniel Brodhead Esq^r
Surveyor General

Certified the 8th feby 1802

Tho Sambourne D.S.

IN TESTIMONY that the above is a copy of the original remaining on file in the Department of Internal Affairs of Pennsylvania, made conformably to an Act of Assembly approved the 16th day of February, 1833, I have hereunto set my Hand and caused the Seal of said Department to be affixed at Harrisburg, this Twenty-Seventh day of March 1911

Henry Houck

Secretary of Internal Affairs.